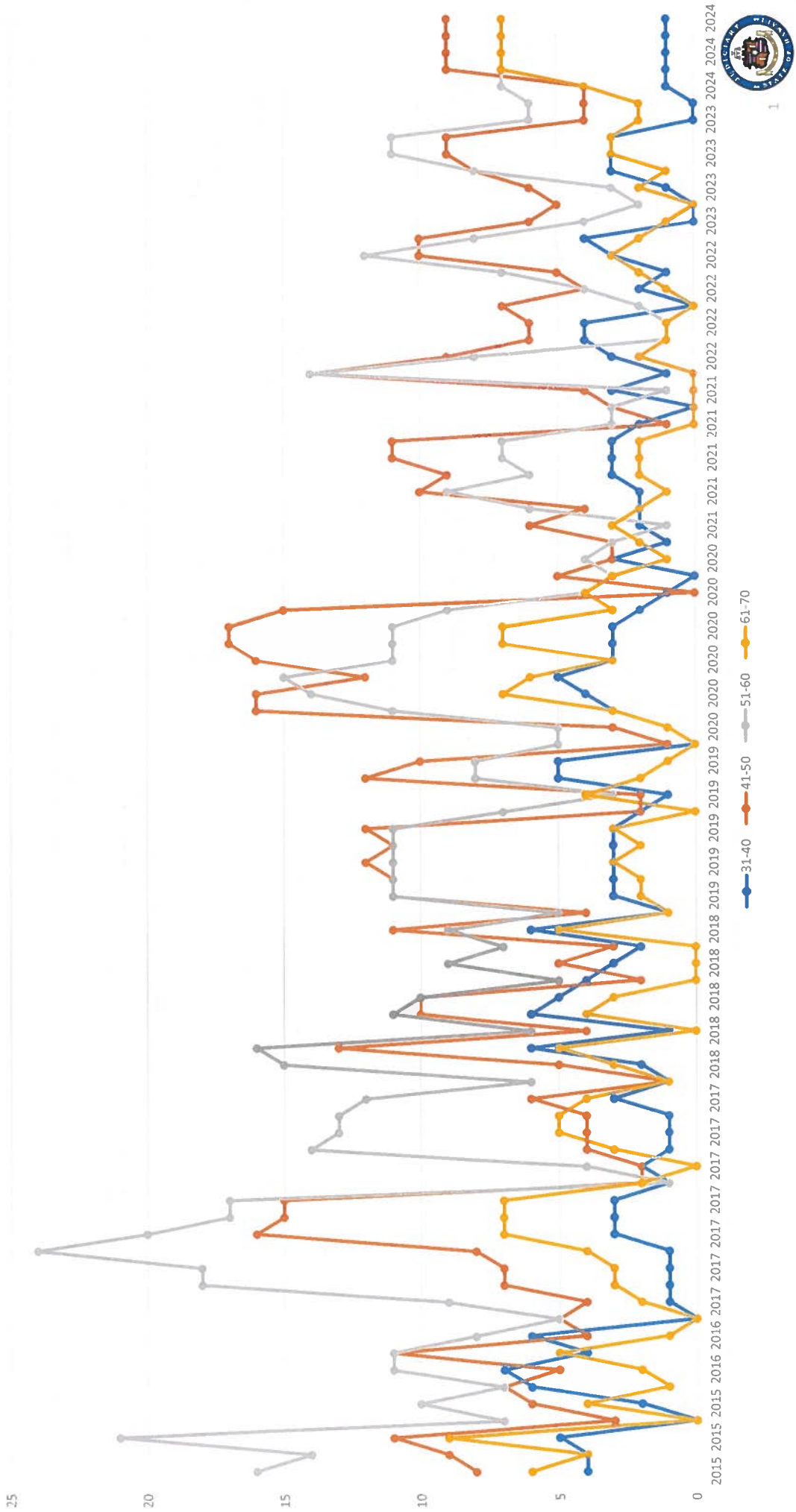


Number of Applicants for Judicial Office by Age, 2015 through August 2024



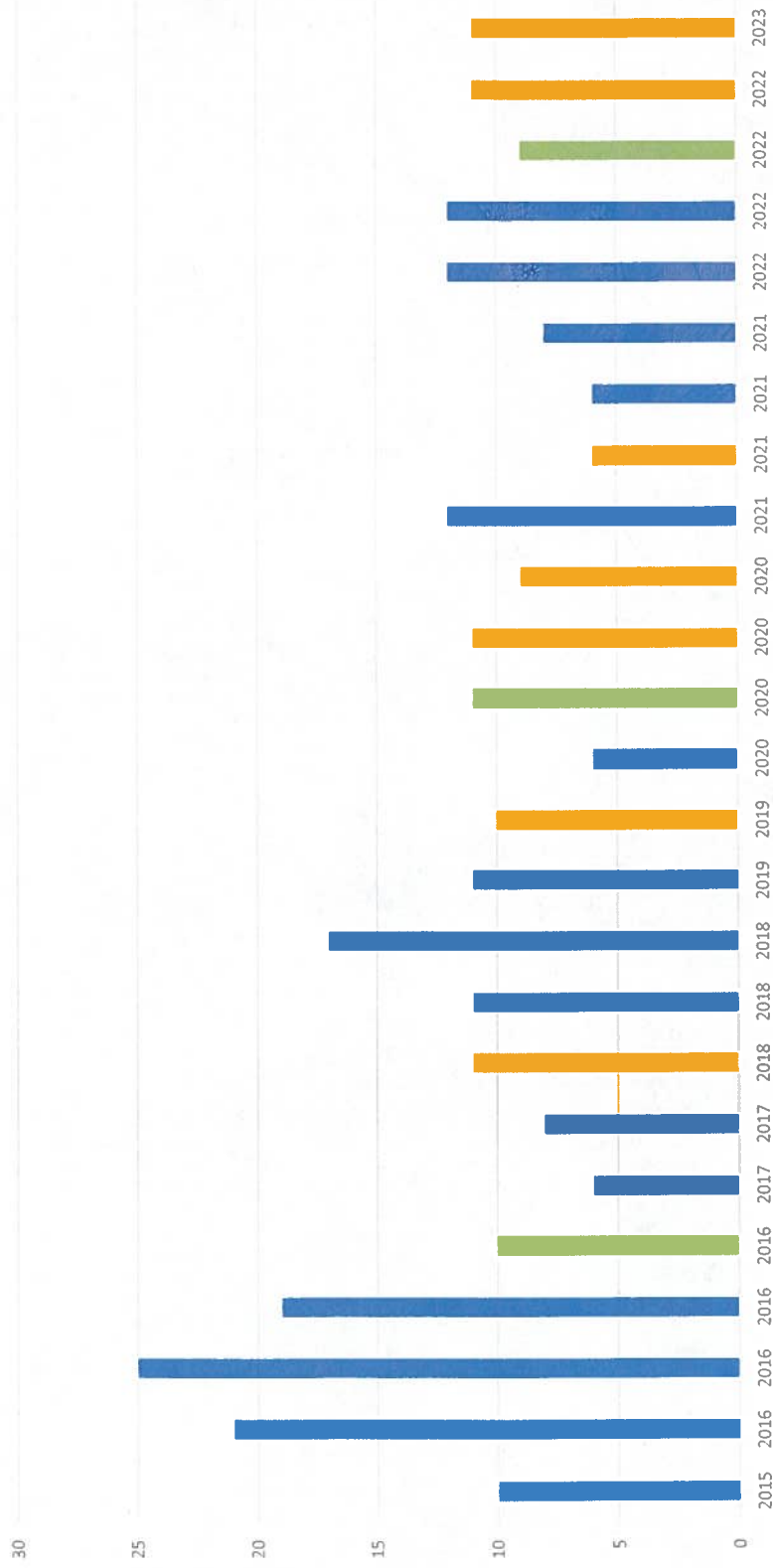
Membership date on or after 7/1/2012 **TIER 2**

	General Employees and Cabinet Officials	Justices and Judges	Governor, LG, Mayors, Legislators, Council Members, County Prosecuting Attorneys, OHA Trustees, Chief Clerk, Asst. Chief Clerk, Sgt. At Arms, Asst. Sgt. At Arms
Normal Retirement	65 w/ 10 yos ; 60 w/ 30 yos	60 w/ 10 yrs	Any age w/ 10 yos
Early Retirement (Age Penalty)	55 w/ 20 yos	55 w/ 25 yos	Any age w/ 10 yos (mixed)
Multiplier	1.75%	3.00%	3.00%
Post-Retirement (COLA)	1.50%	1.50%	1.50%
AFC	5 years	5 years	5 years
Vesting	10 years	10 years	10 years
Interet Rate on Contributions	2.00%	2.00%	2.00%
Employee Contribution Rate	8.00%	9.80%	9.80%

This does **not** apply to those who have a membership date prior to July 1, 2012.



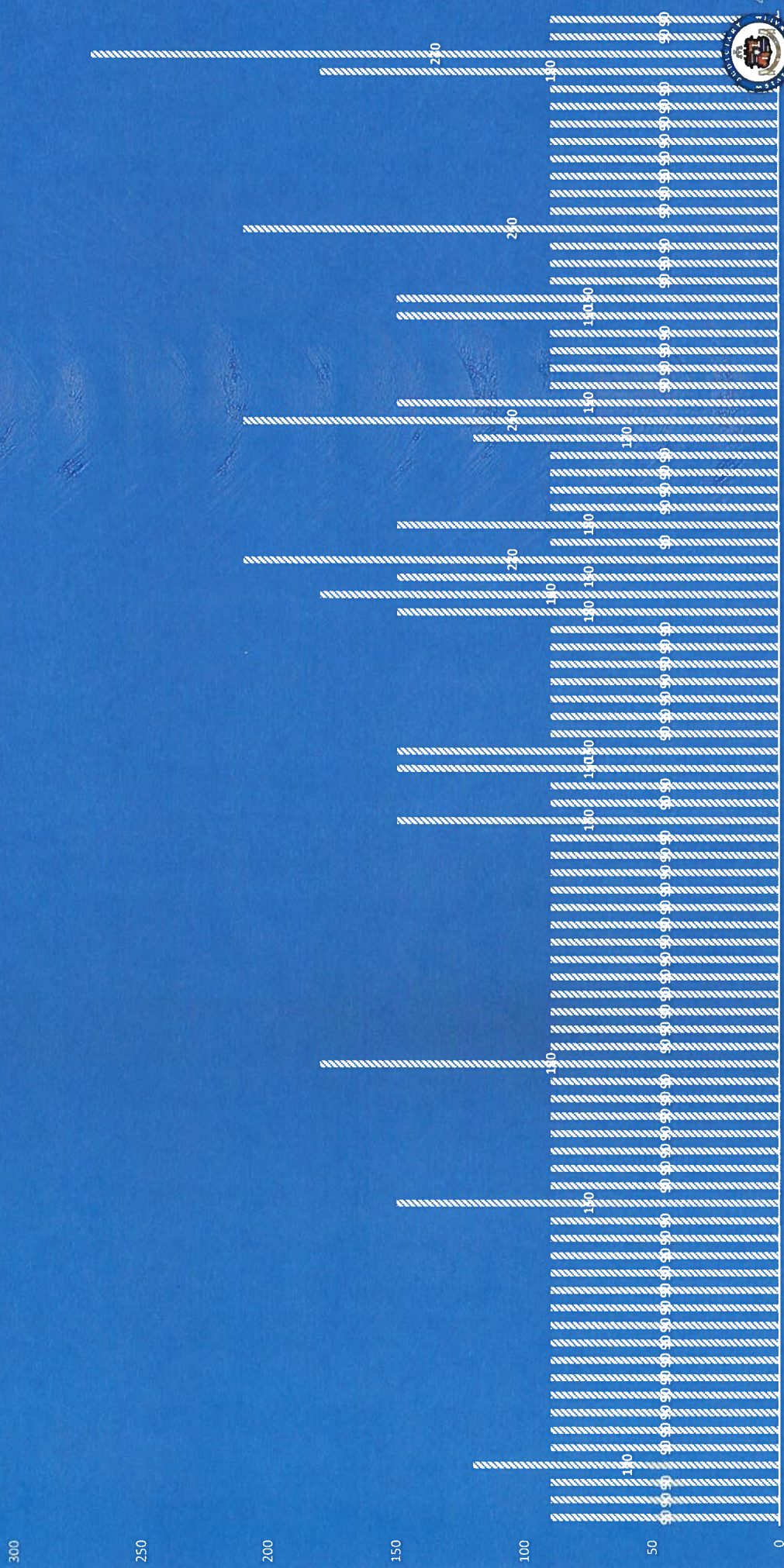
Number of Applicants for Judicial Office in the Second, Third, and Fifth Circuits,  
2015 through August 2024



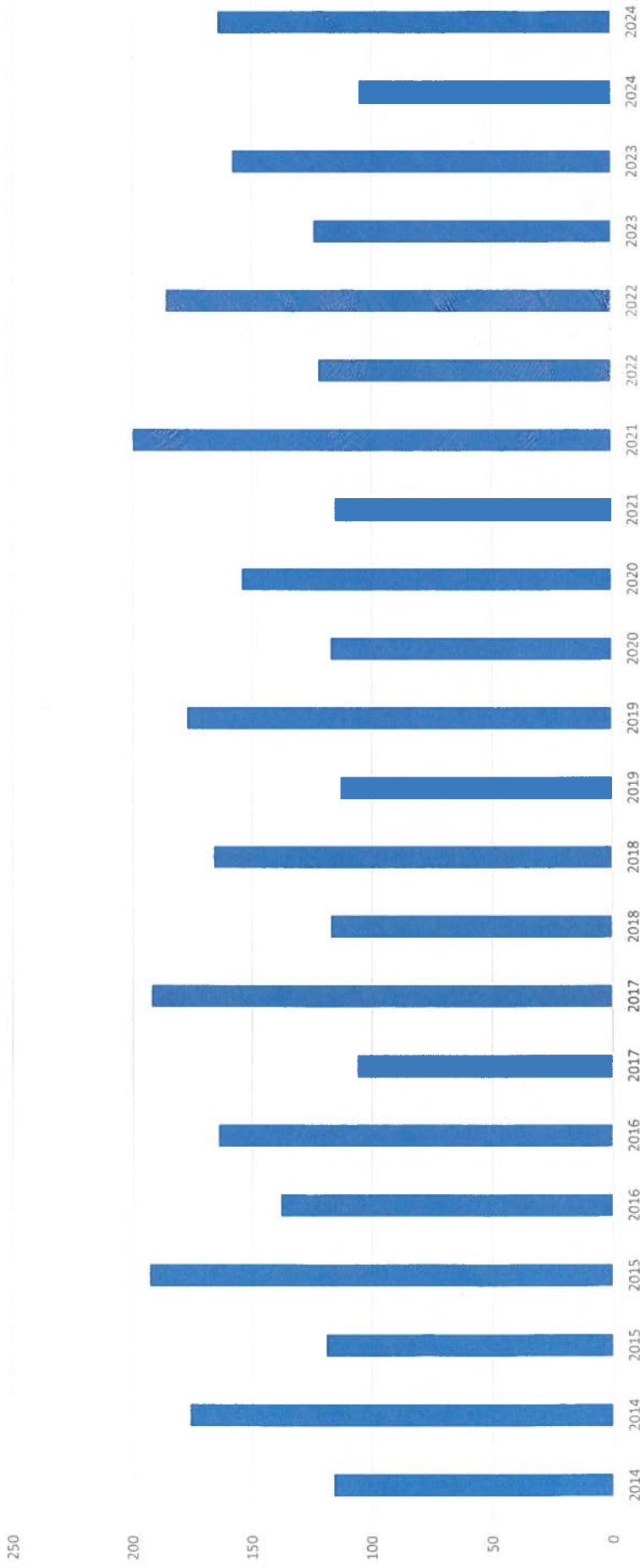
- Second Circuit
- Third Circuit
- Fifth Circuit



DAYS EACH VACANCY WAS IN  
RECRUITMENT BY JSC, 2015 THROUGH AUGUST 2024



Number of Applicants for the Hawai'i Bar Exam, 2014 through 2024



The first bar for each year pertains to the February exam; the second bar for each year pertains to the July exam.



